

# Province Lake Association

Effingham  
Board of Selectmen  
Sept 17, 2019

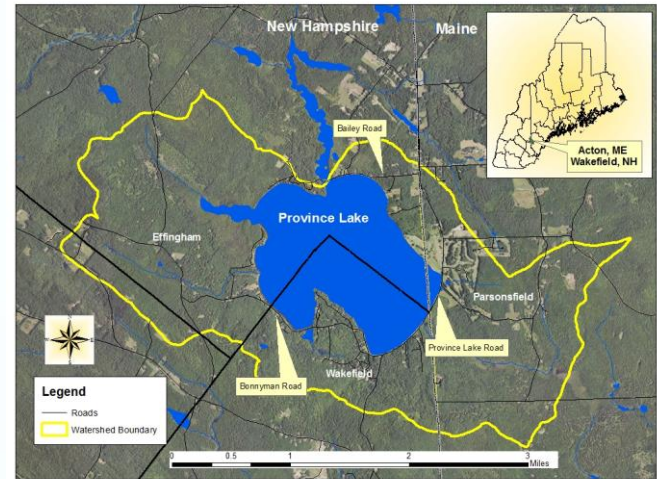


# Our Mutual Interests & Request

- Watershed management to minimize nutrient runoff
  - Delivery of 2014 Province Lake Watershed Management Plan
- Understanding and monitoring Cyanobacteria blooms-potentially toxic
- Invasive species prevention (invasive free at this time)
- Protection of wildlife habitat and recreational opportunities
- Property value protection
- Our Funding Request: \$2000 for 2020 NH Lakes Host Program

# Province Lake

- Watershed area: 4,672 acres (7.3 sq miles)
  - Effingham (45%)
  - Wakefield/Ossipee (21%)
  - Parsonsfield/Newfield (34%)
- Natural glacial lake
  - Surface area 968 acres
  - Shoreline 11.2 miles
    - 65% of shoreline in Effingham
  - Maximum depth: 17 feet / Average depth: 9 feet
- Classified as NH DES **Impaired** Lake (mesotrophic)
  - High total phosphorus, low pH, high Chlorophyll, Mercury
  - Recurring Cyanobacteria blooms
- Small changes in water quality translate to major impacts



# Impacts



Remick Rd Cyano



Rte 153 Cyano



Wolfeboro Milfoil

**15-20+ %** reduction in property values\* if milfoil/invasives present  
**30%** reduction in property values\*\* with persistent cyano blooms  
**~30%** of Effingham tax revenue derived from PL watershed properties

Reduction of the lake's value results in:

- decreased lake property values
- reduced town tax base revenue
- increased tax burden for all Effingham residents



# Province Lake Association

- Dedicated to mitigating impacts to water quality through implementation of the 2014 Watershed Plan
- To Date ~**\$500,000** in State & Federal Grants and Matching Funds have been spent on our Watershed Plan Activities
- Established in 1972.
- We are a certified 501(C)(3) charitable organization and an all volunteer organization
- 150 member families (40% from Effingham)
- Basic dues of \$25, with 80% of members contributing more than the basic membership
- Annual operating budget ~\$20K
- 100% of funds are used to improve water quality
- Partners include Towns of Effingham & Wakefield, NH Lakes, Acton Wakefield Watersheds Alliance (AWWA), NH DES & ME DEP, UNH Lakes Lay Monitoring Program & Stormwater Center and Green Mountain Conservation Group (GMCG)

# PLA Activities

- Invasive species monitoring – To date, PL remains invasive free
  - NH Lake Hosts- ~500 boat inspections/season
    - 2017- 560 hours @ \$5500
    - 2018- 620 hours @ \$7500
    - 2019- 672 hours @ \$8500
    - 2020- same as 2019
    - Effingham funds \$1000/yr. No increase in Town funding since starting the Lake Host program in 2014 even as we have expanded coverage.
    - Requesting \$2000 from the Town for 2020 Lake Host Program
  - Weed Watch Volunteers survey the entire lake once a month
- Cyanobacteria monitoring with NH DES & GMCG
- Ongoing Phosphorus Study to identify & quantify sources of phosphorus in lake sediments
- Monthly Water Quality sampling & testing with UNH

# PLA Activities

- 8 Septic system upgrades completed
- Erosion Reduction utilizing BMPs (Best Management Practices)
  - **110+** Erosion Control Installations completed (AWWA YCC)
    - In excess of 86 tons of sediment & 72 pounds of phosphorus prevented from entering the lake
  - Road stormwater management and routine maintenance in the Towns of Effingham & Wakefield.
  - Ongoing conversation with State of Maine to address the Maine section of Rte 153
- Annual Rte 153 Beach Cleanup (150 lbs+ = 5+ bags trash removed this year)
- Lake level management – Dam and Beaver Control
- Collaborative work with LPC (Loon Preservation Committee) to monitor loon health and behavior
- Ongoing public education- Website, Quarterly Newsletter, Facebook, Emails & Annual Meeting

# Thank You for Partnering with the PLA

## Contact information

- Website: [www.ProvinceLake.org](http://www.ProvinceLake.org)
- Email: [President@ProvinceLake.org](mailto:President@ProvinceLake.org) or [provincelakemembers@gmail.com](mailto:provincelakemembers@gmail.com)
- Province Lake Association Facebook Page
- Address: PLA, PO Box 24, Effingham 03882
- Phone: 207-200-3234
- Current President: Lorie Dunne
- Current Vice President: Jim Aiken
- 2020 Annual PLA meeting: July 18, 2020 at Edge Lake Farm